



Welcome to World Oceans Day 2020

***‘To Aspire, Endeavour and
Thrive Together.’***

Before we start today's assembly take 5 mins to watch the video from the BBCs David Attenborough's Blue Planet II



[https://www.youtube.com/watch?v= 38JDGnr0vA](https://www.youtube.com/watch?v=38JDGnr0vA)



To aspire, endeavour and thrive together

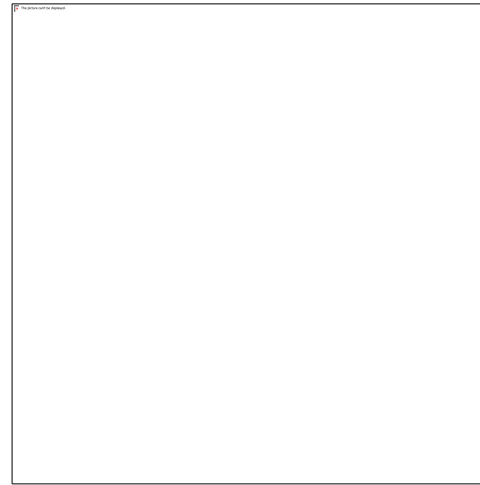
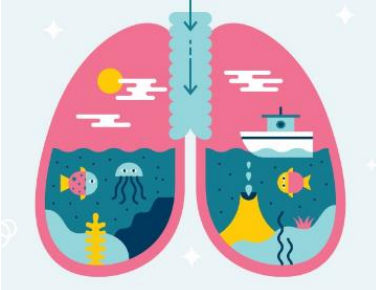
Some interesting facts about our oceans that you may not know...



LOBSTERS **PEE** OUT
OF THEIR **FACES**



EVERY SECOND
BREATH WE TAKE
COMES FROM THE
OCEAN



A PARROT FISH
SLEEPS IN A
BUBBLE OF ITS
OWN **SNOT**



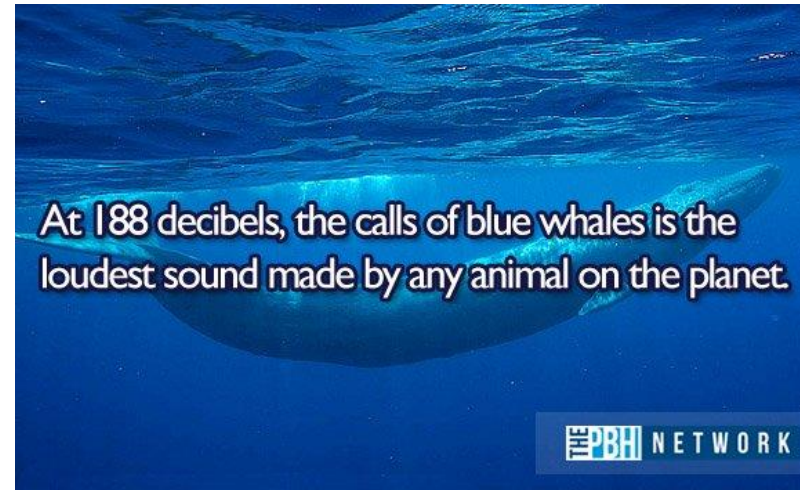
BEING NEAR, IN, ON, OR
UNDER **WATER** CAN
MAKE YOU **HAPPIER**



TINY PARTICLES FROM
CAR TYRES ARE **BIG** OCEAN
POLLUTERS

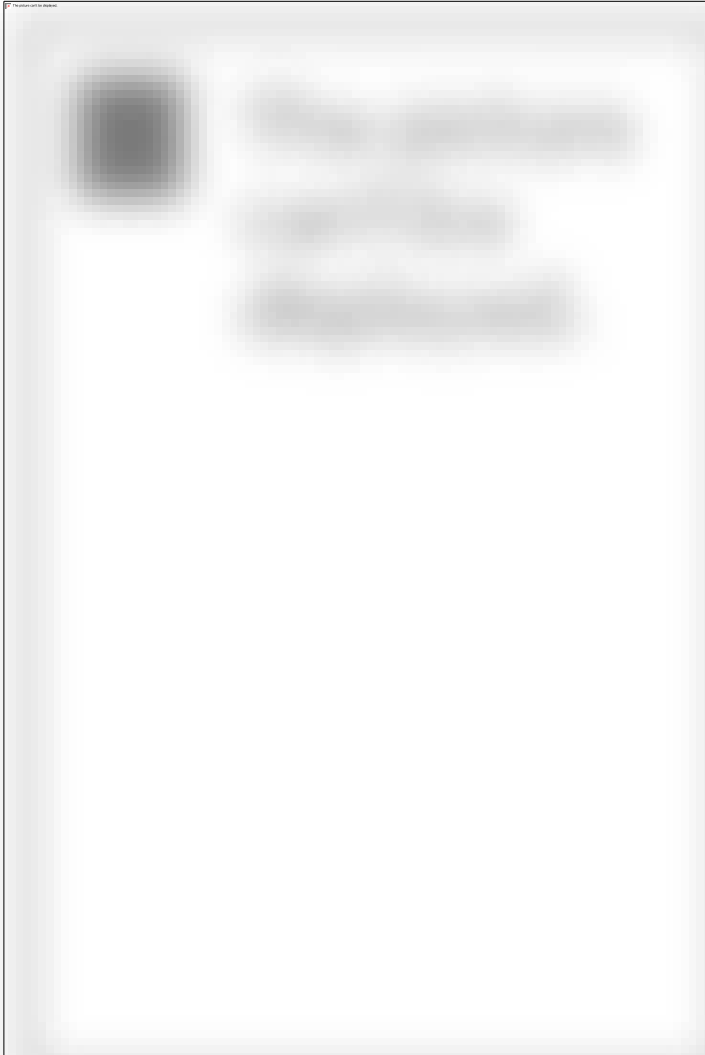


At 188 decibels, the calls of blue whales is the
loudest sound made by any animal on the planet.





To aspire, endeavour and thrive together



We have only explored less than 5 percent of the Earth's oceans. In fact, we have better maps of Mars than we do of the ocean floor



Want to know more facts?
Take a look here

A shrimp's head
is in their head

World's oceans contain nearly
million tons of gold.

<https://www.factslices.com/s-Ocean>



Did you know?

THE OCEAN GETS ITS SALTINESS FROM
THE TEARS OF MISUNDERSTOOD SHARKS
WHO JUST WANT TO CUDDLE

Don't believe everything you find on the
internet!



The ocean is an AMAZING place...but there are other facts about the ocean that are DISTURBING.



Let's watch

- <https://www.youtube.com/watch?v=Yomf5pBN8dY>



To aspire, endeavour and thrive together



TOP 10 ITEMS FOUND



1 2,117,931
cigarettes / cigarette filters



6 692,767
cups, plates, forks,
knives, spoons



2 1,140,222
food wrappers / containers



7 611,048
straws, stirrers



3 1,065,171
beverage bottles (plastic)



8 521,730
beverage bottles (glass)



4 1,019,902
bags (plastic)



9 339,875
beverage cans



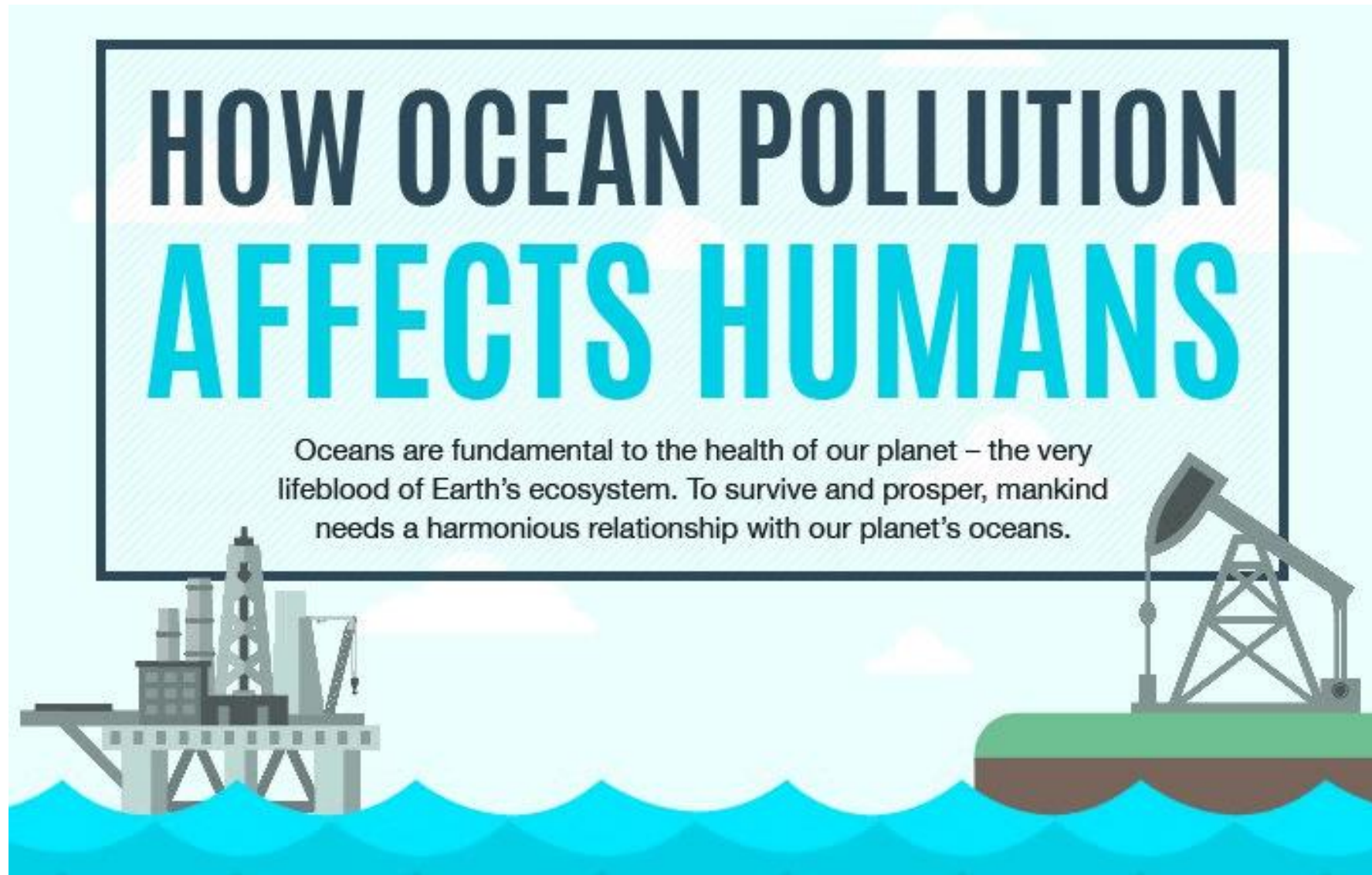
5 958,893
caps, lids



10 298,332
bags (paper)



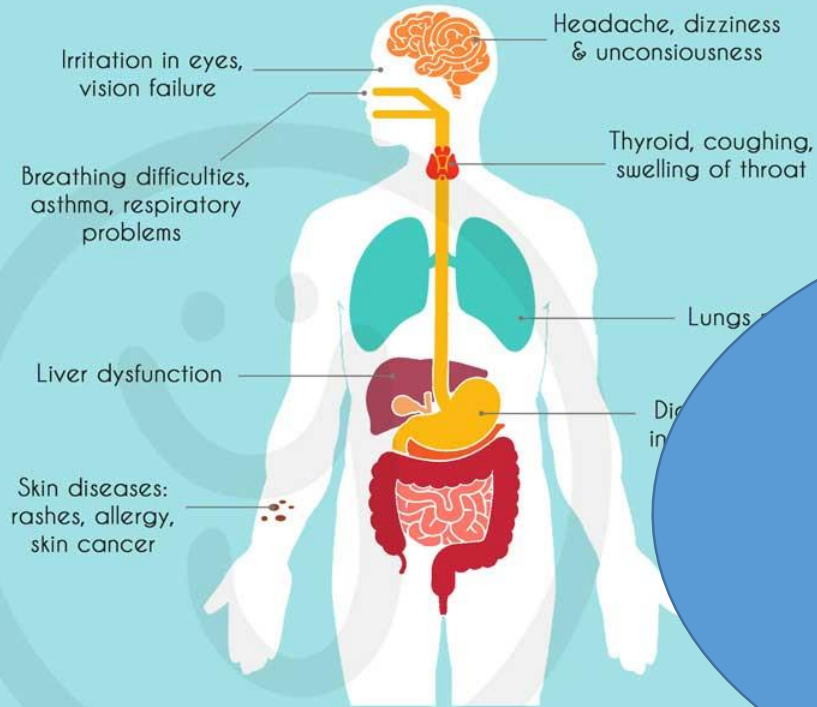
Plastic pollution doesn't just affect the animals of the oceans!



To aspire, endeavour and thrive together

PLASTIC

Impact on Human Health



SOIL POLLUTION



AIR POLLUTION



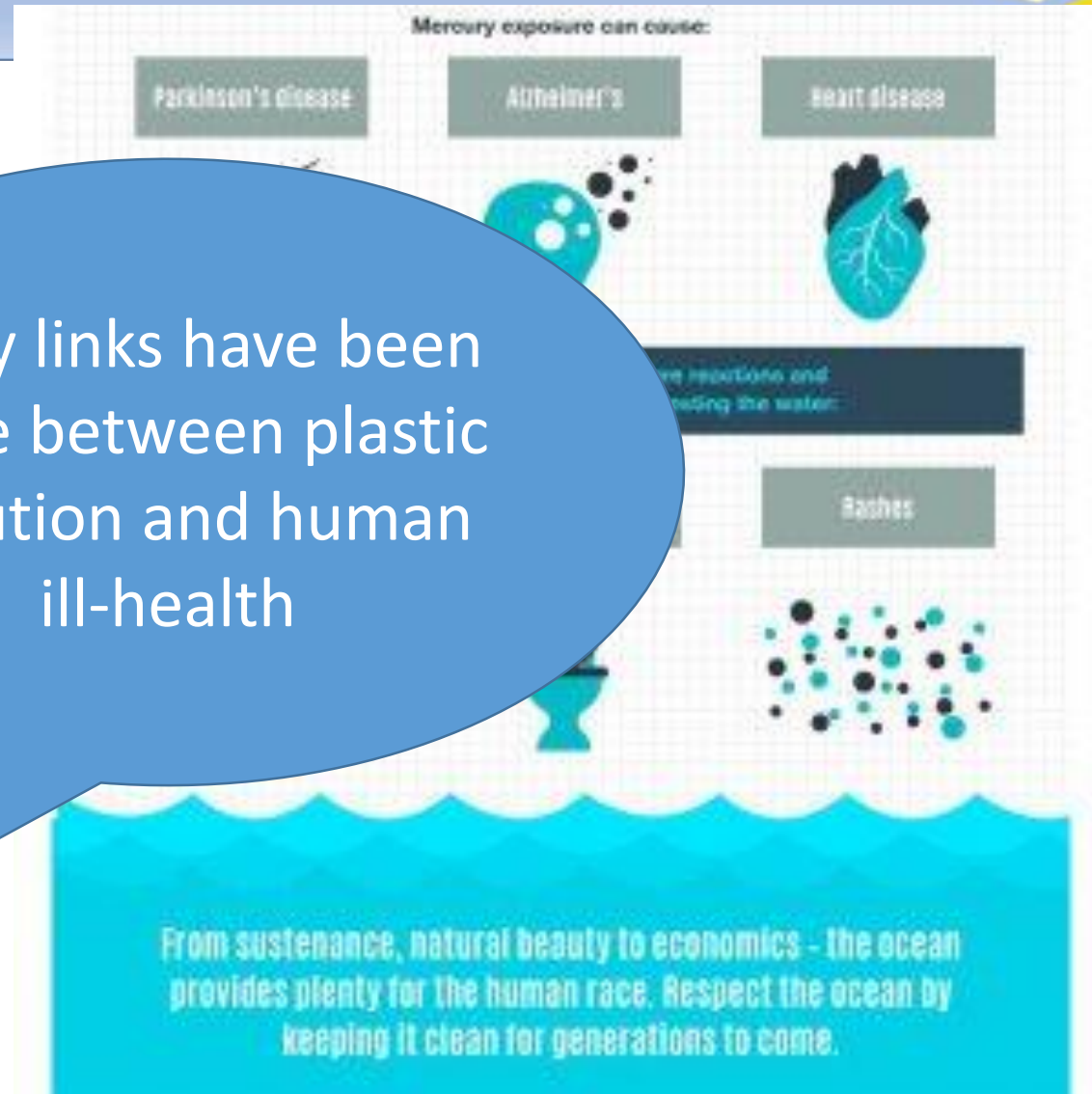
WATER POLLUTION

Source:
www.ecologycenter.org
www.mindfully.org
www.answers.com



TryForGood.com

Many links have been made between plastic pollution and human ill-health



To aspire, endeavour and thrive together

What can WE DO NOW?



REDUCE, RECYCLE
REFILL

To aspire, endeavour and thrive together

Now for the SCIENCE!



- [https://www.youtube.com/watch?v= 6xINyWPpB8](https://www.youtube.com/watch?v=6xINyWPpB8)



Values in this week's assembly



Our Values

Prepare to Thrive

Tenacity

Show motivation and determination, adopting a 'can do' attitude and a strong work ethic.

Hard Work

Work relentlessly to achieve and improve; understanding that trying your best can lead to achieving your ambitions.

Responsibility

Demonstrate compassion, generosity and empathy when confronted with difference or need, valuing and celebrating diversity.

Independence

Be self-reliant, organising time, resources and tasks, meeting deadlines and demonstrating maturity.

Visionary

Offer curiosity and thoughtfulness; seeking out new knowledge and weaving it into our understanding of a complex world. Value imagination, creativity and new perspectives.

Excellence

Produce high quality, crafted work, responding to feedback with enthusiasm and precision. Commit to the highest standards of behaviour, attendance and punctuality. Show pride in yourself and your school.

RESPONSIBILITY – we are **part of a community** and with this comes **responsibility** for ourselves and others. Don't be selfish/uncaring – give of your time to others and look after one another – **and do what you can to look after our planet!**