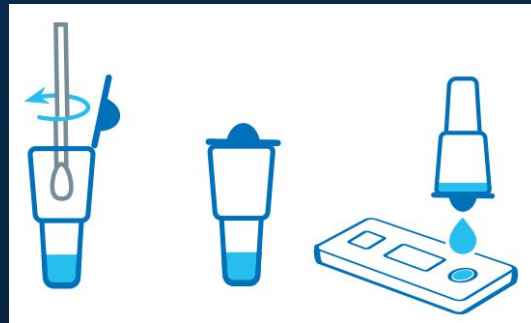


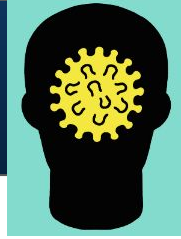


# Home Testing for students w/c 22nd March





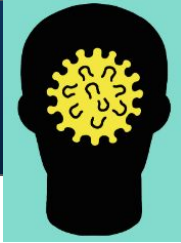
# What is it?



- To safeguard the health of the teaching workforce and keep as many staff, pupils and students in school and college as possible, rapid lateral flow coronavirus (COVID-19) tests are available to all schools and colleges. The use of rapid lateral flow tests allows us to identify individuals with coronavirus (COVID-19) who **do not** have symptoms, which make up around **a third** of all cases.
- Finding asymptomatic cases, along with other infection prevention and control measures such as social distancing, can help us **manage the transmission of the virus.**



# Why are we testing at home?



- Up to one in three people who have COVID-19 can spread the virus without knowing. This is because they have no symptoms. To reduce the spread of the virus, we need to identify those individuals.
- Testing identifies people who have the virus with no symptoms and therefore **stops them spreading it to others.**
- We have begun this process by inviting all students to have 3 LFD tests in school within the first two weeks of students' return.
- Now you know how it works, you can carry the test out at home.



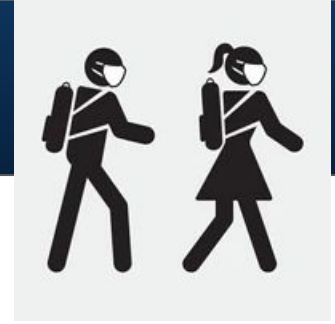
# When will it take place?



- Home testing starts in the w/c 22nd March
- You should do the test **twice a week**
- Ideally, test yourself on a **Monday** and a **Thursday** morning
- You will also need to test **over the Easter holidays**



# Who is being tested?



- All students in secondary schools are being invited to self-test
- Staff have been doing this too since 8th March
- If you are over the age of 11, you should administer the test yourself with parental support
- If you are 11, your parent should carry out the test and report it

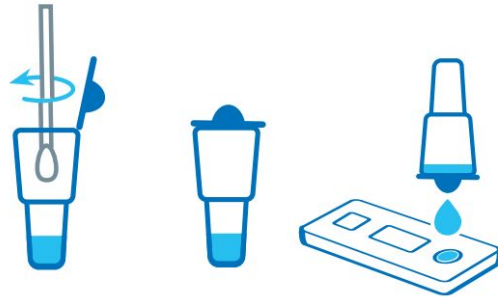


# What does the test involve?

It is the same **LFD test** that you completed in school, just at home.

This video tells you how to take the test:

<https://www.youtube.com/watch?v=S9XR8RZxKNo&list=PLvaBZskxS7tzQYIVg7lwH5uxAD9UrSzGJ&index=2>

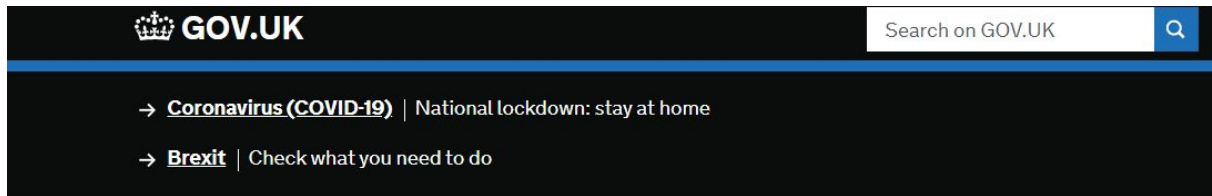




# What do I do once I've completed the test?

- You must inform **NHS Test and Trace as well as the school.**
- This applies whether your test result is positive, negative or void.

[NHS Test and Trace:](#)



[Home](#) > [Coronavirus \(COVID-19\)](#) > [Testing for coronavirus \(COVID-19\)](#)

**Report a COVID-19 rapid  
lateral flow test result**



# What do I do once I've completed the test?

- You must inform **NHS Test and Trace as well as the school.**
- This applies whether your test result is positive, negative or void.

School form:

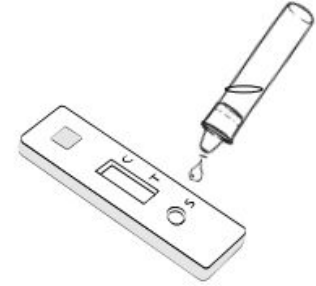
The screenshot shows a digital form titled 'Student Home Test'. It contains two main sections. The first section is for 'Email address', marked with a red asterisk, and includes a 'Valid email address' label and a note stating 'This form is collecting email addresses. [Change settings](#)'. The second section is for 'Child's First Name', also marked with a red asterisk, and includes a 'Short-answer text' label. On the right side of the form, there is a vertical toolbar with icons for adding, deleting, duplicating, and other editing functions.





# What happens if I test positive?

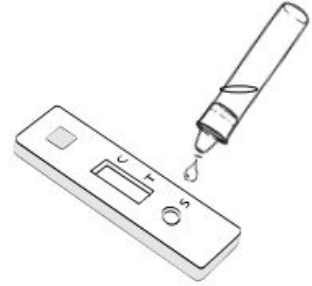
- Inform NHS Test and Trace
- Inform the school
- **DO NOT** attend school
- Self-isolate for 10 days following government guidance
- Only return to school after 10 days if you do not have Covid-19 symptoms





# What happens if the test is void?

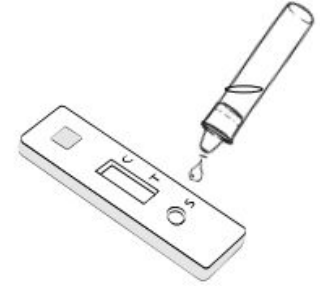
- Inform NHS Test and Trace
- Re-read the directions for testing in the leaflet with the test kit
- Complete another test
- Inform the school of the result





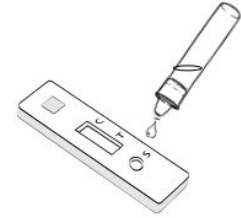
# What happens if the test is negative?

- Inform NHS Test and Trace
- Inform the school
- Attend school as usual



# What happens if a close contact tests positive?

- You and your parents will be informed
- You will be instructed to self-isolate for 10 days
- You must follow government guidelines
- Even if you take a LFD or PCR test and you are negative, you may not return to school until the end of the 10 days





# Do my parents need to consent?

- They do not need to inform the school of their consent
- They need to read the privacy notice
- They are agreeing to the privacy notice by informing us of the result



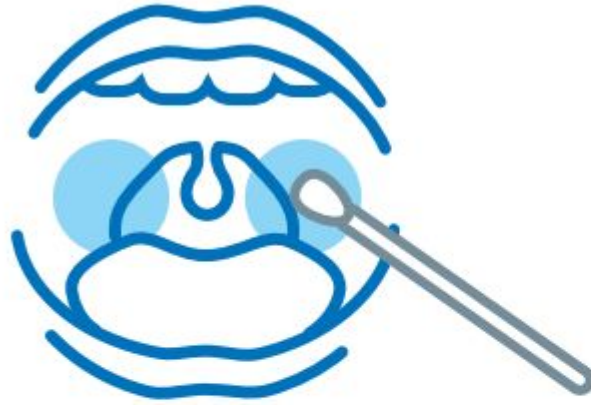
# When do I get the test kits?

- You will receive your kit when you have your third test in school (you may have received this already)
- There are 3 kits in a box; you will get two more boxes before the end of term
- This will allow you to take two tests per week from 22nd March and throughout the Easter holidays



1

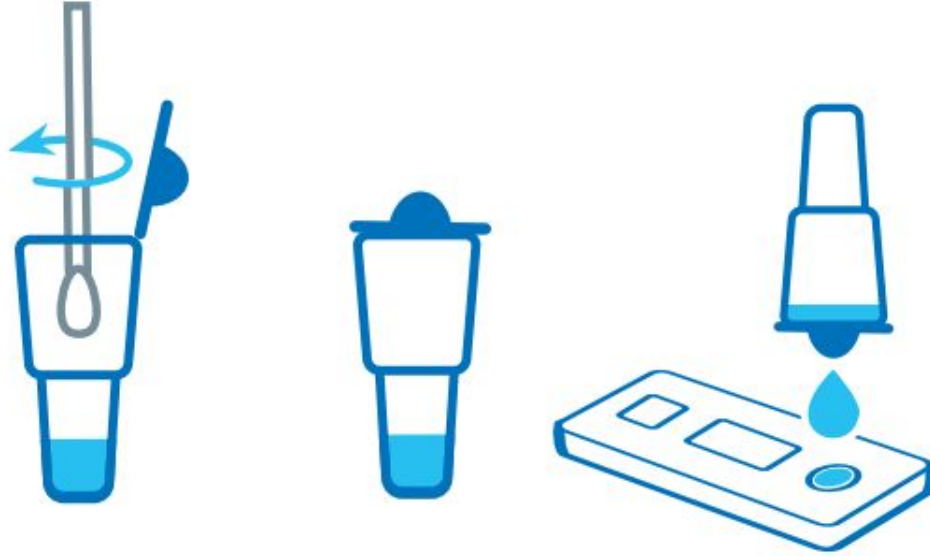
**Set-up:** sanitise testing area and hands, unpack kit, read instructions



2

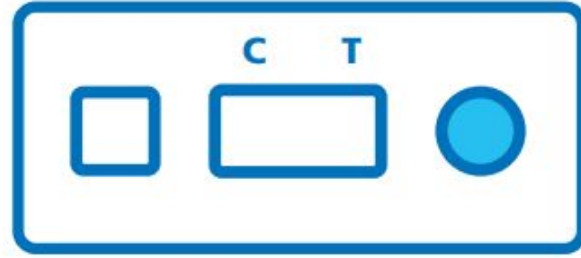
**Swab:** throat  
then nose





3

**Process test:** place swab  
in liquid in tube, squeeze  
liquid onto test device



4

**Read result:** ensure test device is on a flat surface, wait and read result at 30 minutes



# Remember

- Inform the school of your result
- Inform NHS Test and Trace
- Do not attend school if you test positive or have symptoms!